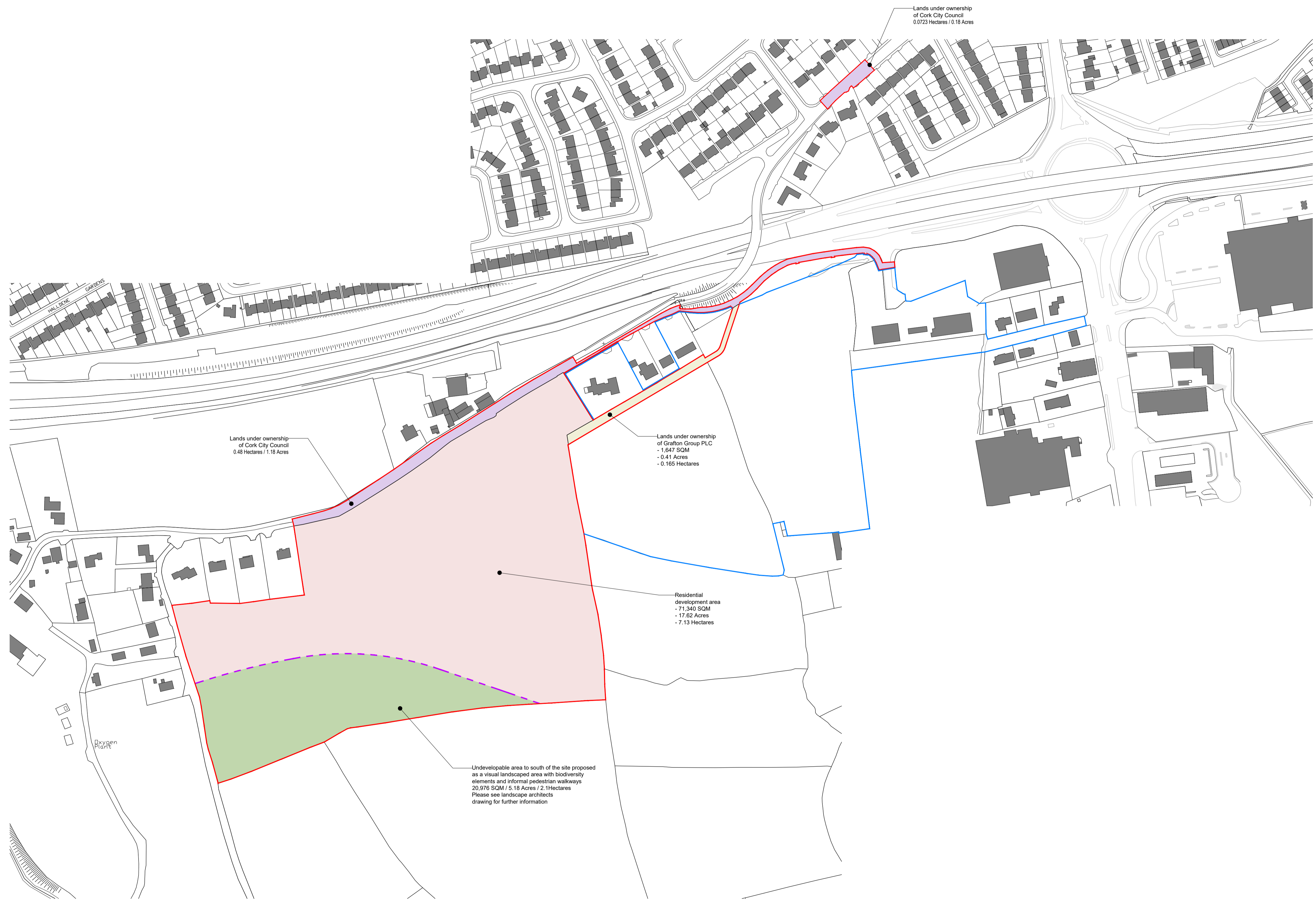


- GENERAL NOTES**
1. COPYRIGHT RESERVED
 2. DO NOT SCALE DRAWING. USE FIGURED DIMENSIONS ONLY.
 3. ALL DISCREPANCIES TO BE REPORTED TO ARCHITECT.
 4. THE CONTRACTOR IS RESPONSIBLE FOR CHECKING ALL LEVELS AND DIMENSIONS.
 5. ALL STRUCTURE TO BE TO STRUCTURAL ENGINEERS DETAILS.
 6. ALL MECH/ELEC SERVICES TO SERVICES ENGINEERS DETAILS.
 7. ALL PROPRIETARY ITEMS TO BE INSTALLED IN ACCORDANCE WITH MANUFACTURERS INSTRUCTIONS.
 8. CONTRACTOR IS RESPONSIBLE FOR THE COORDINATION OF STRUCTURE PARTIES AND SERVICES.

REV	DATE	DESCRIPTION	BY



- ▭ Extent of application site
9.95 Hectares / 24.60 Acres
- ▭ Adjacent Lands outlined in Blue include combined land ownerships of Ardstone Residential Partners Fund, Grafton Group Plc and Cork City Council
- ▭ Residential development zone
71,340 SQM/ 17.62 Acres / 7.13 Hectares
- ▭ Extent of lands within ownership of Cork City Council
5,502 SQM / 1.36 Acres
0.55 Hectares
- ▭ Southern green space unsuitable for built development
20,989 SQM/ 5.18 Acres/ 2.1 Hectares
- ▭ Lands under ownership of Grafton Group PLC
1,647 SQM /0.41 Acres
0.165 Hectares



JOHN FLEMING ARCHITECTS
The Tree House, 17, Richview Office Park
Clonsilla, Dublin, D14 X8R2
T: (01) 6689888 E: info@jfa.ie W: www.jfa.ie

CLIENT
ARDSTONE-HOMES-LTD

PROJECT
Residential Development

Ardstone, Bishopscourt, Co Cork

DRAWING
Existing site plan
Land ownership map

SCALE 1:1000 @ A1 JOB NO. 1923
DRAWN BY: EH
DATE: March 2021
DRAWING NUMBER: ARG - JFA - SP - 00 - DR - A - P1007 REVISION: -

DRAWING LOCATION
I:\projects\19 jfa\1923\planning\1 planning application\1.0.dwg

DRAWING STATUS
PLANNING

Existing site plan
Land ownership map

PLANNING

